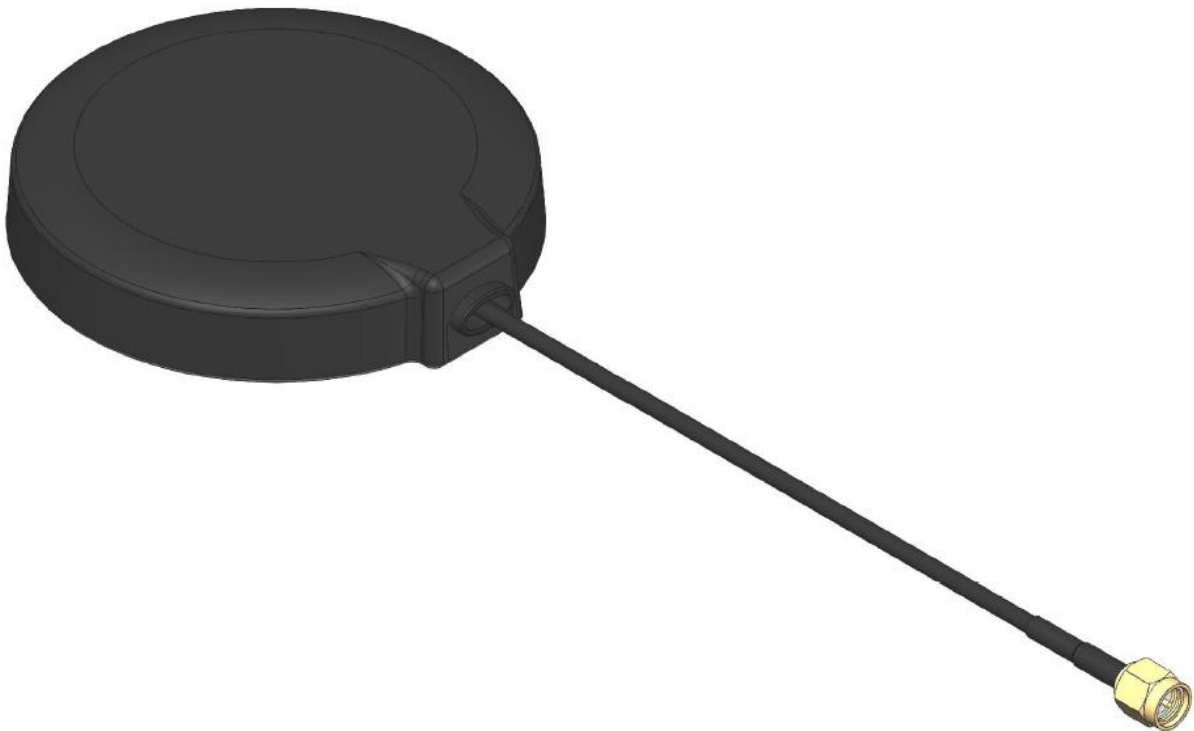


External Single-port Active GNSS Antenna

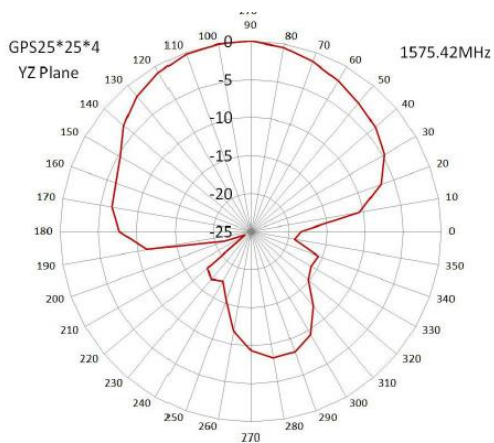
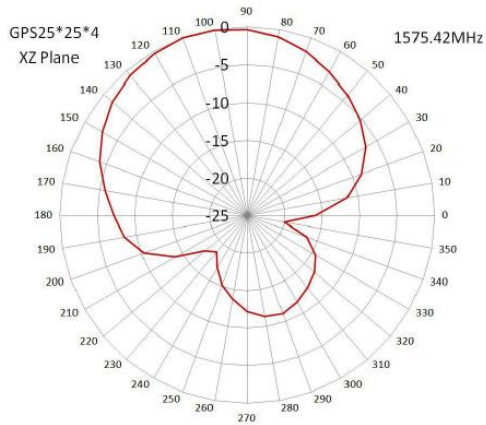
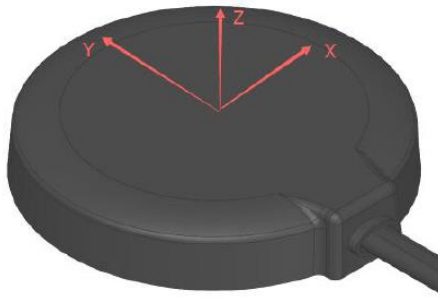
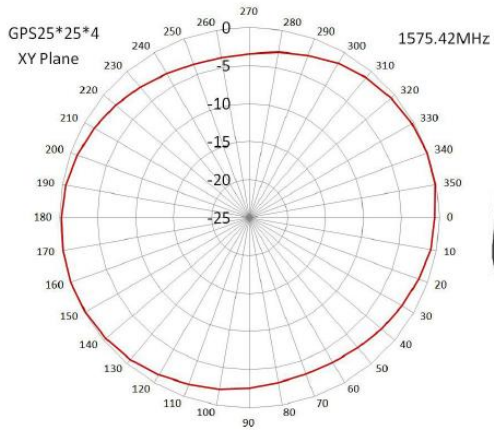
- Technology: GPS L1/BD B1
- High gain GNSS antenna (LNA Integrated)
- Magnet and Adhesive mounting options
- Applications in utilities, tracking, transportation, wireless communications etc.



| Item | Performance Specifications |
|-------------------------------|---|
| GNSS Antenna Center Frequency | 1575.42±3MHz |
| GNSS Antenna Band Width | CF±10MHz |
| GNSS Antenna Polarization | RHCP |
| GNSS Antenna Gain | 5dBic (Zenith) |
| GNSS Antenna V.S.W. R | <1.5 |
| GNSS Antenna Impedance | 50 Ω |
| GNSS Antenna Axial Ratio | 3dB (max) |
| LNA Gain | 28±2dB |
| LNA Noise Figure | ≤1.5dB |
| LNA V.S.W. R | <2 |
| LNA Supply Voltage | 3~5V DC |
| Current Consumption | ≤30mA |
| Cable | RGB174, fully customized |
| Connector | SMA/MCX/FAKRA, fully customized |
| Radome Material | ABS |
| Mounting Method | Magnet/Adhesive, fully customized |
| Operating Temperature | -40°C~+85°C |
| Relative Humidity | Up to 95% |
| Ingress Protection | IP67 |
| Vibration | 10 to 55Hz with 1.5mm amplitude 2 hours |
| Environmentally Friendly | ROHS compliant |

Radiation Pattern

GNSS Antenna



Antenna Mechanical Drawing

