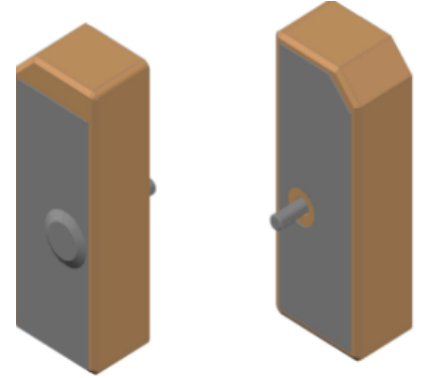


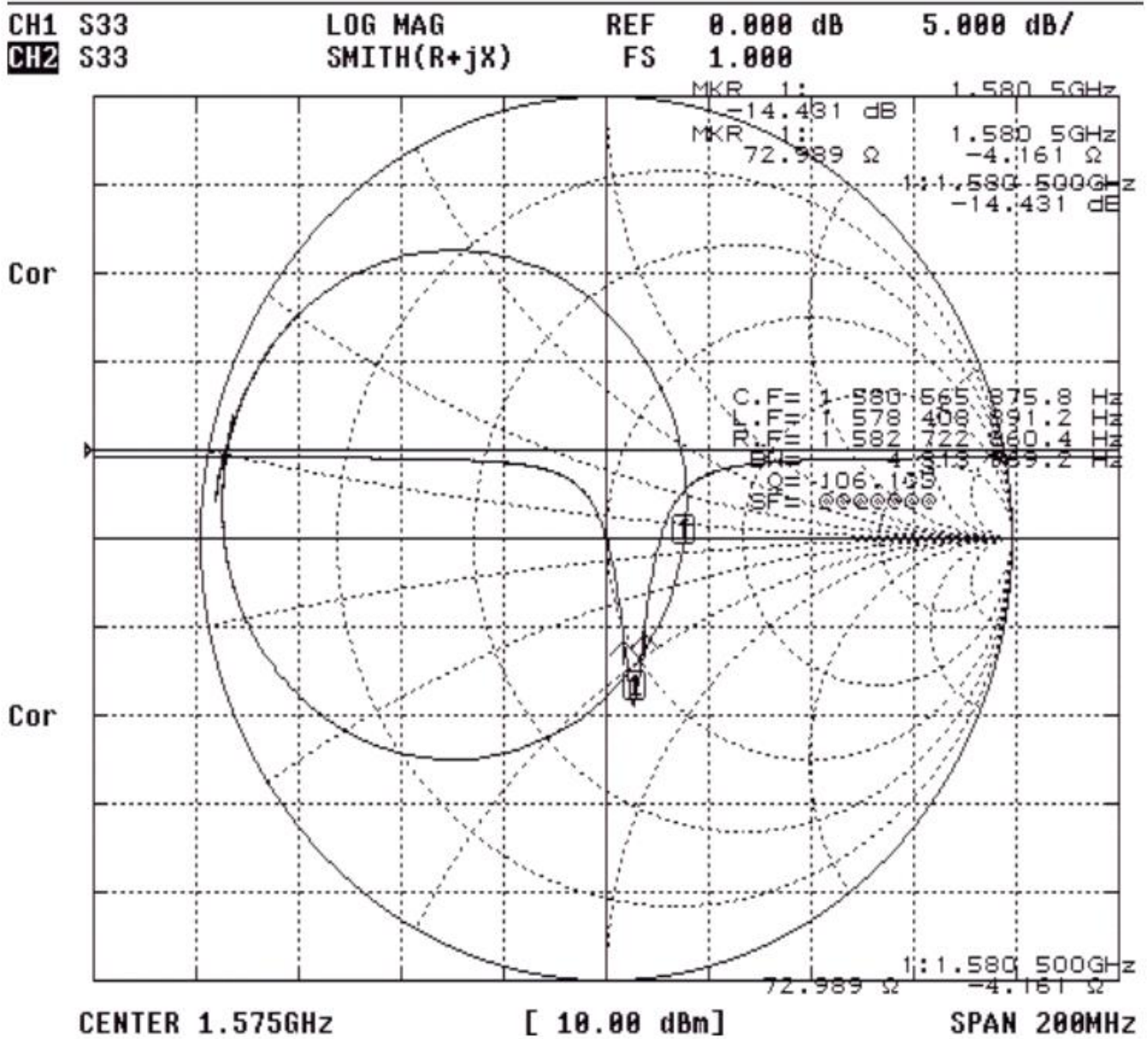
Passive Ceramic Patch Antenna

- Single-band, Single feed
- Embedded passive antennas for GNSS
- Technology: GPS L1; BD B1
- Pin type
- Applications in navigation, automotive, tracking, monitoring, security etc.



Item	Performance Specifications
Center Frequency	1575 MHz
Return Loss @ F0	≤-10dB
Polarization	LP
Gain @ Zenith	-0.5dBic
Ground plane	20x6mm
Impedance	50 Ω
Frequency Temperature Coefficient	±20 ppm/°C
Operation Temperature Range	-40 ~ +85°C

S-Parameter



Mechanical Drawing

